

SANTA TERESA, NEW MEXICO

AL-9068 (FAA)

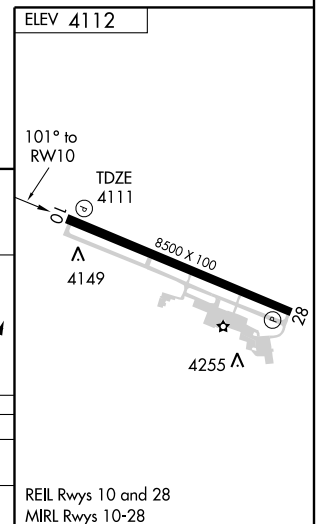
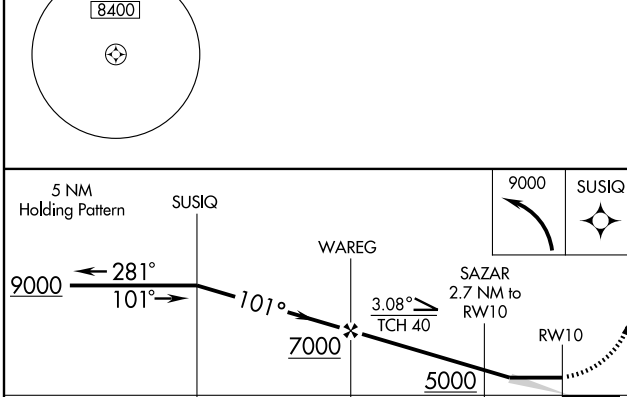
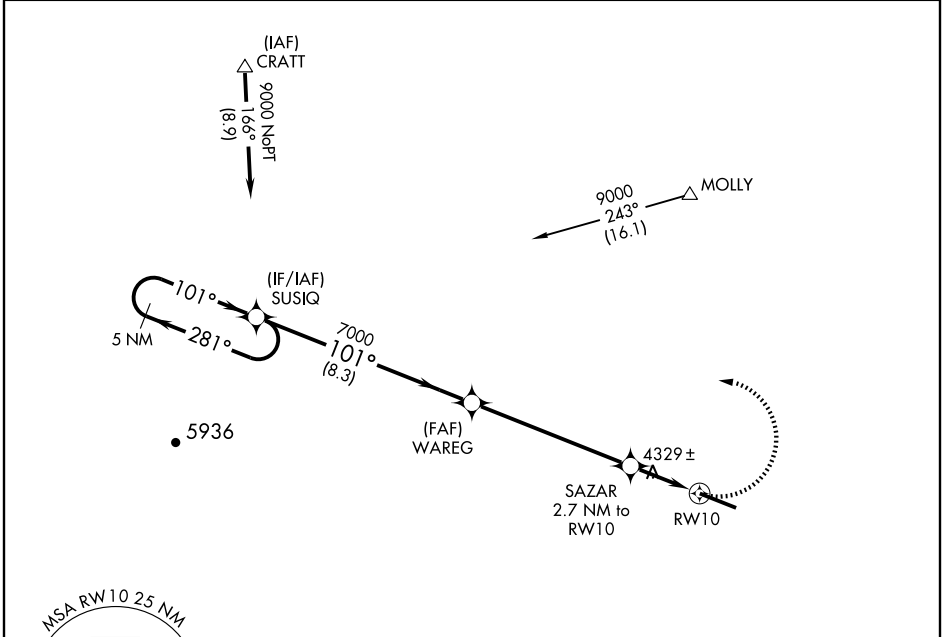
# RNAV (GPS) RWY 10

SANTA TERESA/DONA ANA COUNTY AT SANTA TERESA (5T6)

APP CRS <b>101°</b>	Rwy Idg <b>8500</b>
	TDZE <b>4111</b>
	Apt Elev <b>4112</b>

<p><b>NA</b> DME/DME RNP-0.3 NA. Use El Paso Inl altimeter setting; if not received, procedure NA.</p>	<p>MISSED APPROACH: Climbing left turn to 9000 direct SUSIQ and hold.</p>
--	---

<p>AWOS-A <b>122.725</b></p>	<p>ALBUQUERQUE CENTER <b>128.2 285.5</b></p>	<p>UNICOM <b>122.725 (CTAF)</b></p>
----------------------------------	--	---



CATEGORY	A	B	C	D
LNAV MDA	4700-1	589 (600-1)	4700-1½ 589 (600-1½)	4700-1¾ 589 (600-1¾)
CIRCLING	4700-1	588 (600-1)	4700-1½ 588 (600-1½)	4700-2 588 (600-2)

REIL Rwy 10 and 28  
MIRL Rwy 10-28

SANTA TERESA, NEW MEXICO  
Orig-A 10042

SANTA TERESA/DONA ANA COUNTY AT SANTA TERESA (5T6)  
31°53'N-106°42'W

# RNAV (GPS) RWY 10

SW-1, 05 MAY 2011 to 02 JUN 2011

SW-1, 05 MAY 2011 to 02 JUN 2011